

Peninsula Art League Presents

2018 Open Juried Show Oil and Acrylic Workshop

October 12–14, 2018

9:30 to 4:30 daily

“Essential Concepts of Landscape Painting”

Workshop instructor is PAL'S 2018 Open Show Juror Mitchell Albala

A landscape painter and author of Landscape Painting: Essential Concepts and Techniques for Plein Air and Studio Practice

Level: This workshop is not suitable for first-time painters (those who have never painted or mixed color at all), but is ideally suited for plein air or studio landscape painters who want to strengthen their skills in landscape.

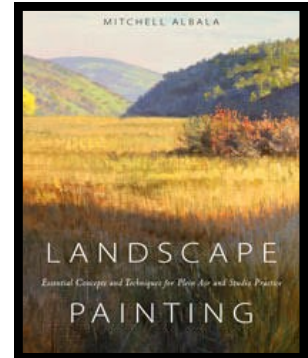
Media: Suitable for oil and acrylic painters, but not watercolor.

About Mitchell Albala

Mitchell Albala's semi-abstract and atmospheric landscapes have been exhibited nationally and in Seattle at Lisa Harris Gallery.



His book, Landscape Painting: Essential Concepts and Techniques for Plein Air and Studio Practice, is the best selling landscape painting book in the nation. Mitchell is also a dedicated workshop instructor at Gage Academy of Art in Seattle, Pacific Northwest Art School, and Daniel Smith Artist's Materials. He led painting adventures in Italy in 2015 with Arte Umbria and in 2017 with Winslow Art Center. He has lectured on Impressionism and landscape painting at the Seattle Art Museum and written for *International Artist* and *Artists & Illustrators* magazines. In 2016 his work was profiled in the French arts magazine, *Pratique des Arts*. His popular painting blog, which serves as a companion to his book, was awarded the #12 spot on feedspot's "Top 75 Painting Blogs." See more of his work and learn about his teaching at blog.mitchalbala.com.



About the Workshop

Landscape painting poses a unique set of challenges that requires a genre-specific approach. In this in-depth 3-day intensive workshop Mitch will cover the essential concepts and practices that have made his landscape painting book the best-selling landscape guide in the country. Working from photographs in the slower more controlled environment of the studio, you'll be guided through a series of exercises that will break down each phase of the landscape painting process into manageable parts. Topics to be covered are:

- site selection and the requirements subjects must have in order to translate well into a painting
- the proper way to use reference photos
- simplification and massing
- how to compose using a limited focus
- landscape composition
- how to start a painting with a shape and value orientation
- color strategies
- paint handling

Daily Schedule: 9:30 – 4:30

Daily schedule includes time for snacks/meals: bring your own sack lunch.

Amenities: 18 hrs. of instruction, demonstrations and practice; generous individual attention; easels/chairs provided; free parking on site; daily snacks plus hot and cold beverages.

Location: Donna Trent's Studio: 4224 83rd Av Ct NW, Gig Harbor, WA98335

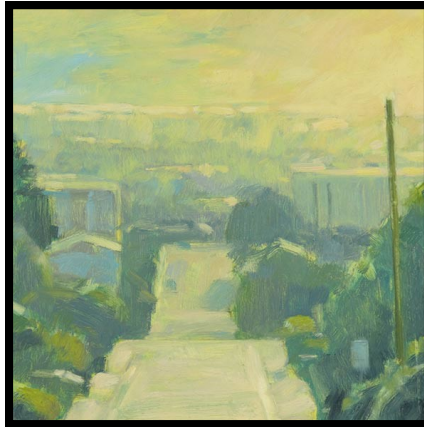
Further Information: Go to

Peninsula Art League.com

Questions:

Email Carlene Salazar:

carlene.salazar@gmail.com



Lessons are applicable to both plein air and studio work. This workshop is ideal for those who want a thorough introduction to Mitchell's approach, or those who want to paint under his guidance.

WORKSHOP DATES: October 12-14 2018

Total COST: \$395\$100 DEPOSIT reserves your enrollment. (Covers workshop, snacks and beverages provided by host) Deposit due August 1. Include the short application below. (Deposit non-refundable after September 15, except partial or full refund for emergencies only, at discretion of Host.)

Mail Payments to: Peninsula Art League, c/o Carlene Salazar, 267 Dluhosh Rd, Onalaska, WA 98570. \$285 Balance payable by October 1. 16 maximum enrollment.

Supply list emailed upon receipt of deposit. Anyone not paid in full by October 1, will be dropped and wait list applicants will be added. At this time, any applicants on a wait list will be notified of openings.

Application: Please Print

Name: _____

Address: _____

Contact Email: _____

Phone: _____

Media: _____

Amount Enclosed: _____